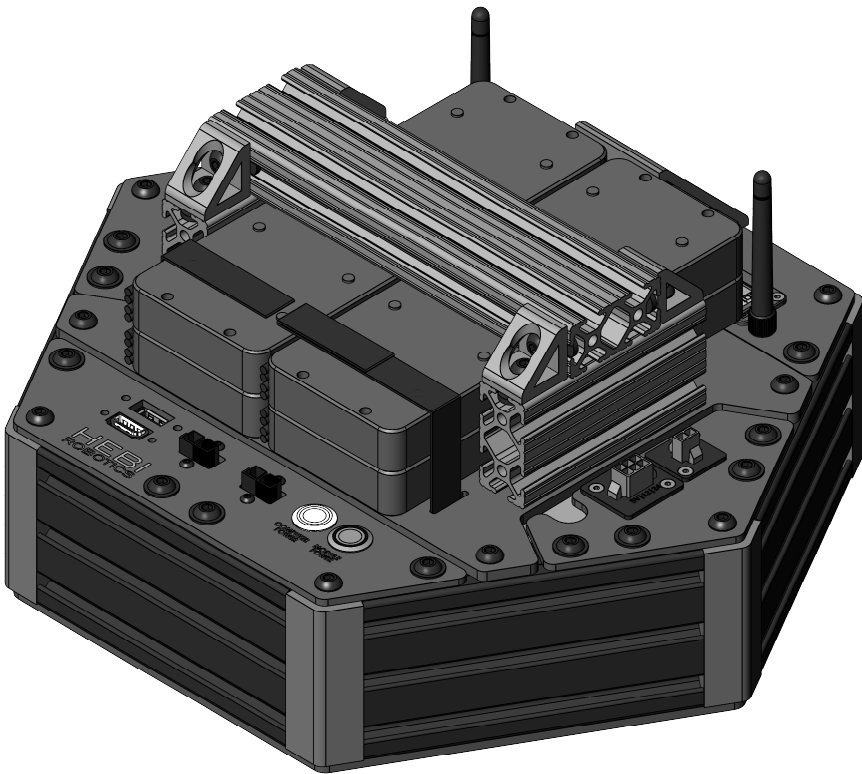
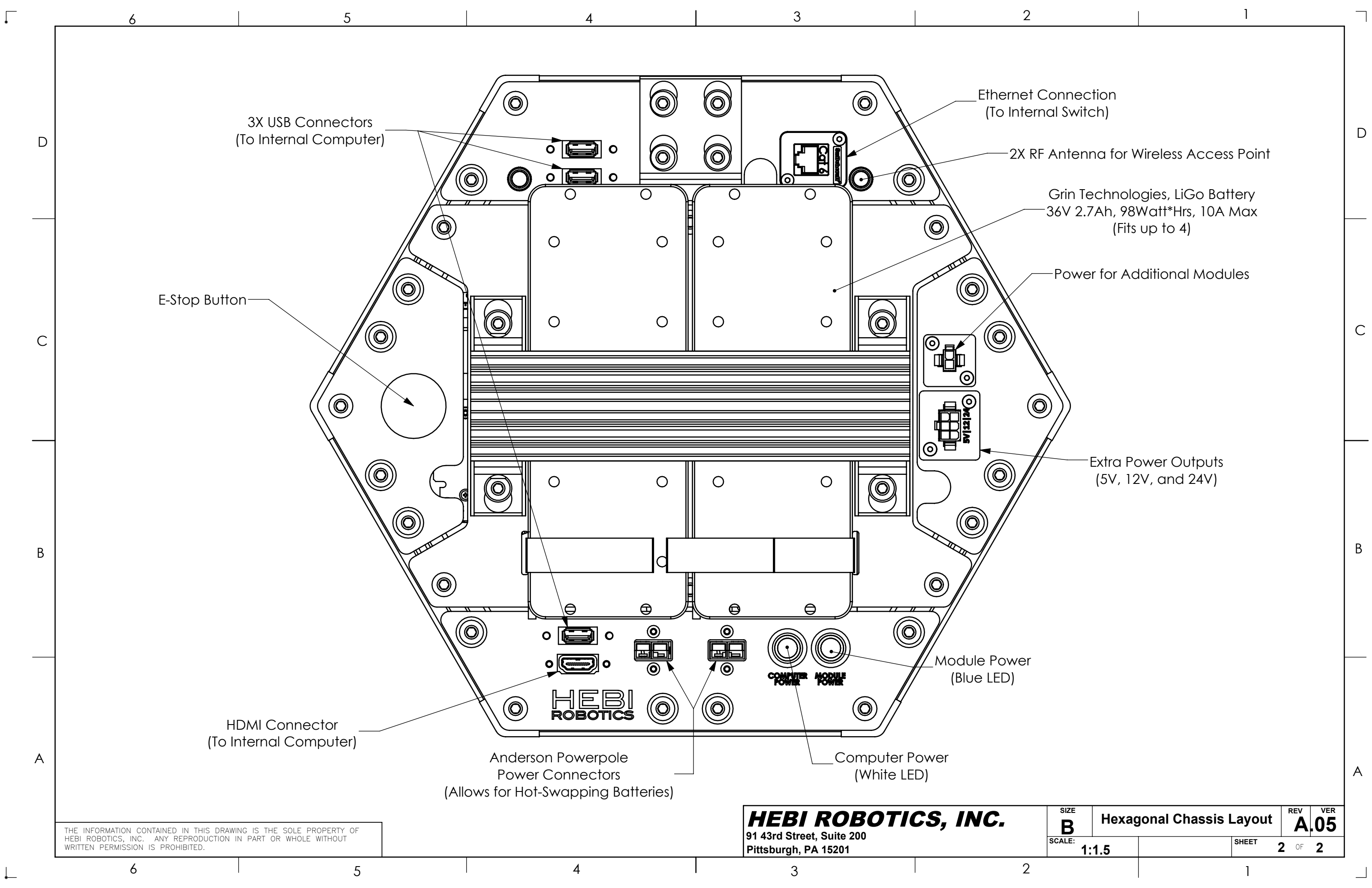


REVISIONS			
REV.	DESCRIPTION	DATE	APPROVED
A.01	INITIAL DRAFTING AND LAYOUT.	6 JUNE 2018	A WILLIG
A.02	MINOR LAYOUT CHANGES AND UPDATED TITLE BLOCK	10 SEPT 2018	A WILLIG
A.03	ADDED ACCESS POINT ANTENNAS	12 SEPT 2018	A WILLIG
A.04	REMOVED ONE ETHERNET PORT FOR EXTRA POWER OUTPUTS	18 SEPT 2018	A WILLIG
A.05	UPDATED 1/4-20, 3/8" LENGTH BOLTS TO FLANGED BOLTS	14 JAN 2019	A WILLIG



AUTHORIZATION		<b>HEBI ROBOTICS, INC.</b>			
DFTG:	A WILLIG	18 DEC 2017	91 43rd St, Suite 200 Pittsburgh, PA 15201		
DSGMR:	A WILLIG	DEC 2017	PROJECT: HEBI Kits		
CHKR:			Modular Chassis Kit, Hexagonal		
ENGR:					
UNLESS OTHERWISE SPECIFIED DIMENSIONS ARE IN MM		SIZE <b>B</b>		REV <b>A.05</b>	
DO NOT SCALE DRAWING		TOLERANCES: X.X ±.30 X.XX ±.08 ANGLES ±1.00°		SCALE: 1:3	
				WEIGHT: 7000.000 G	
				SHEET 1 OF 2	
				FILE NAME: Hexagonal Chassis Layout.SLDDRW	

THE INFORMATION CONTAINED IN THIS DRAWING IS THE SOLE PROPERTY OF HEBI ROBOTICS, INC. ANY REPRODUCTION IN PART OR WHOLE WITHOUT WRITTEN PERMISSION OF IS PROHIBITED.



THE INFORMATION CONTAINED IN THIS DRAWING IS THE SOLE PROPERTY OF  
HEBI ROBOTICS, INC. ANY REPRODUCTION IN PART OR WHOLE WITHOUT  
WRITTEN PERMISSION IS PROHIBITED.

**HEBI ROBOTICS, INC.**  
91 43rd Street, Suite 200  
Pittsburgh, PA 15201

SIZE	Hexagonal Chassis Layout		REV	VER
<b>B</b>			<b>A</b>	<b>05</b>
SCALE:	1:1.5		SHEET	2 OF 2