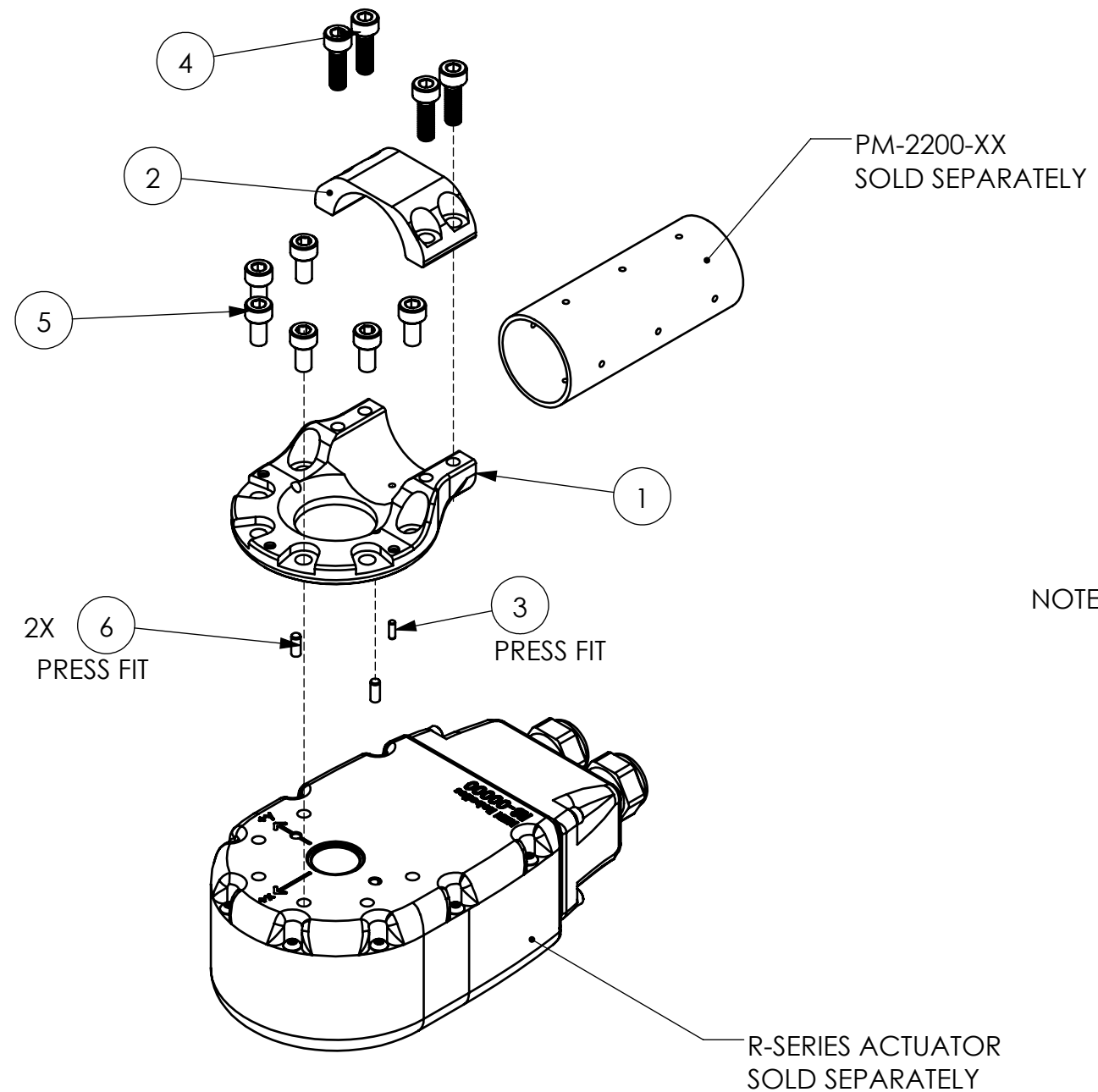


REVISIONS			
REV.	DESCRIPTION	DATE	APPROVED
A.01	INITIAL DRAFTING AND LAYOUT.	26 APR 2019	H KIM

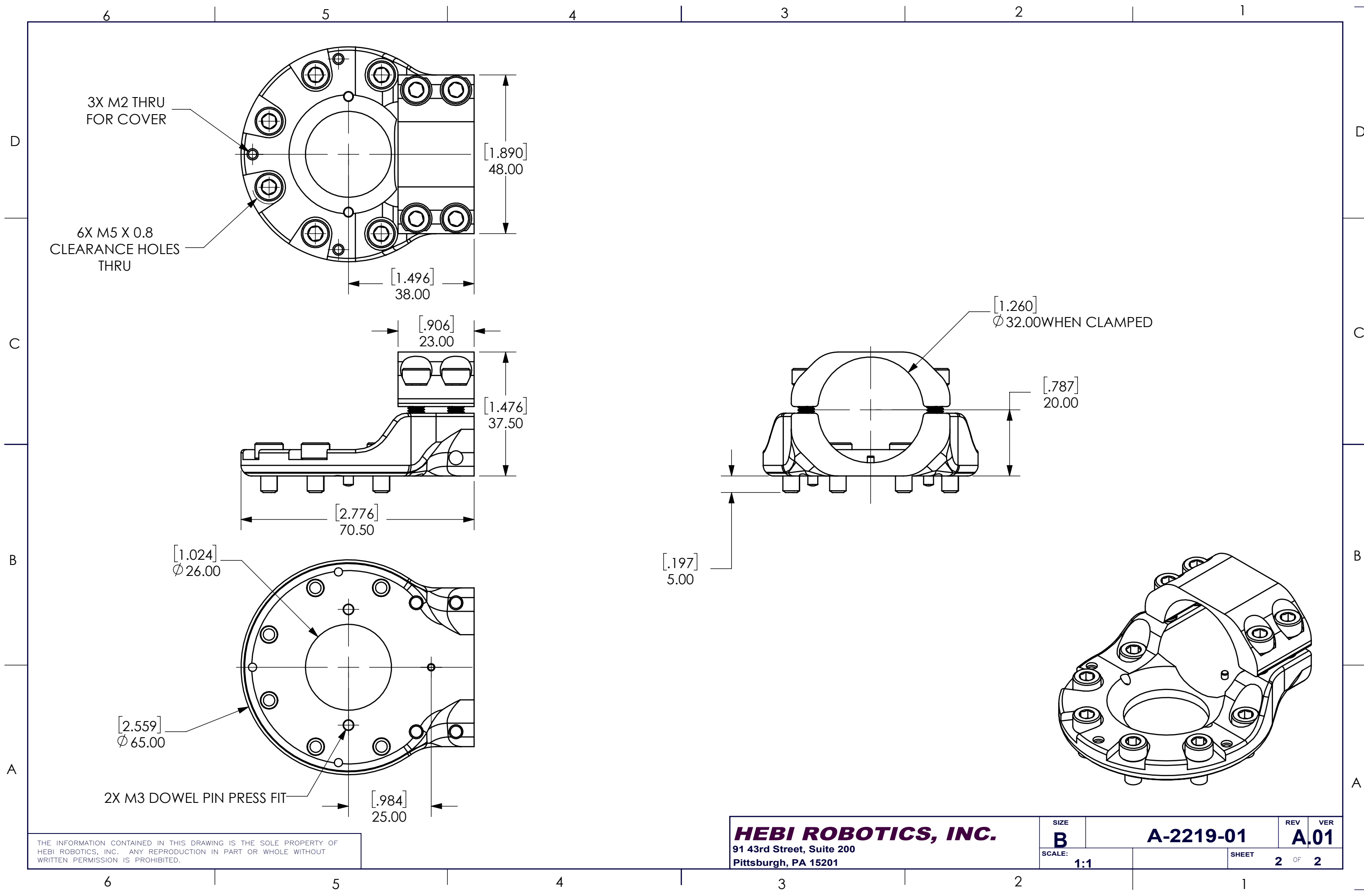


NOTE: TOTAL WEIGHT EXCLUDES R-SERIES ACTUATORS (SEE CONFIGURATION ON SHEET 2)

ITEM NO.	PART NUMBER	DESCRIPTION	Default/ QTY.
1	PM-2512-01	Housing Tube Mount	1
2	PM-2148-02	Tube Clamp	1
3	PP-2136-06	M2 Dowel Pin, 6mm Length, SS	1
4	PP-2410-16	M5 SHCS, 16mm Length, Stainless Steel	4
5	PP-2410-10	M5 SHCS, 10mm Length, Stainless Steel	6
6	PP-2452-08	M3 Dowel Pin, 8mm Length, Stainless Steel	2

AUTHORIZATION		<b>HEBI ROBOTICS, INC.</b>	
DFTG: H KIM	11 APR 2019	91 43rd St, Suite 200 Pittsburgh, PA 15201	
DSG NR: H KIM	11 APR 2019	PROJECT: R-Series Accessories	
CHKR:		Housing Tube Adapter Assembly	
ENGR:			
UNLESS OTHERWISE SPECIFIED DIMENSIONS ARE IN MM DO NOT SCALE DRAWING			
TOLERANCES:		X.X ±.30	REV VER
	X.XX ±.08	<b>B A-2219-01 A.01</b>	
	ANGLES ±1.00°	SCALE: 1:2	WEIGHT: 0.00 G SHEET 1 OF 2

THE INFORMATION CONTAINED IN THIS DRAWING IS THE SOLE PROPERTY OF HEBI ROBOTICS, INC. ANY REPRODUCTION IN PART OR WHOLE WITHOUT WRITTEN PERMISSION OF IS PROHIBITED.



THE INFORMATION CONTAINED IN THIS DRAWING IS THE SOLE PROPERTY OF HEBI ROBOTICS, INC. ANY REPRODUCTION IN PART OR WHOLE WITHOUT WRITTEN PERMISSION IS PROHIBITED.

HEBI ROBOTICS, INC.	SIZE	<b>B</b>	<b>A-2219-01</b>	REV	<b>A.01</b>
91 43rd Street, Suite 200	SCALE:	<b>1:1</b>		SHEET	<b>2 OF 2</b>
Pittsburgh, PA 15201					