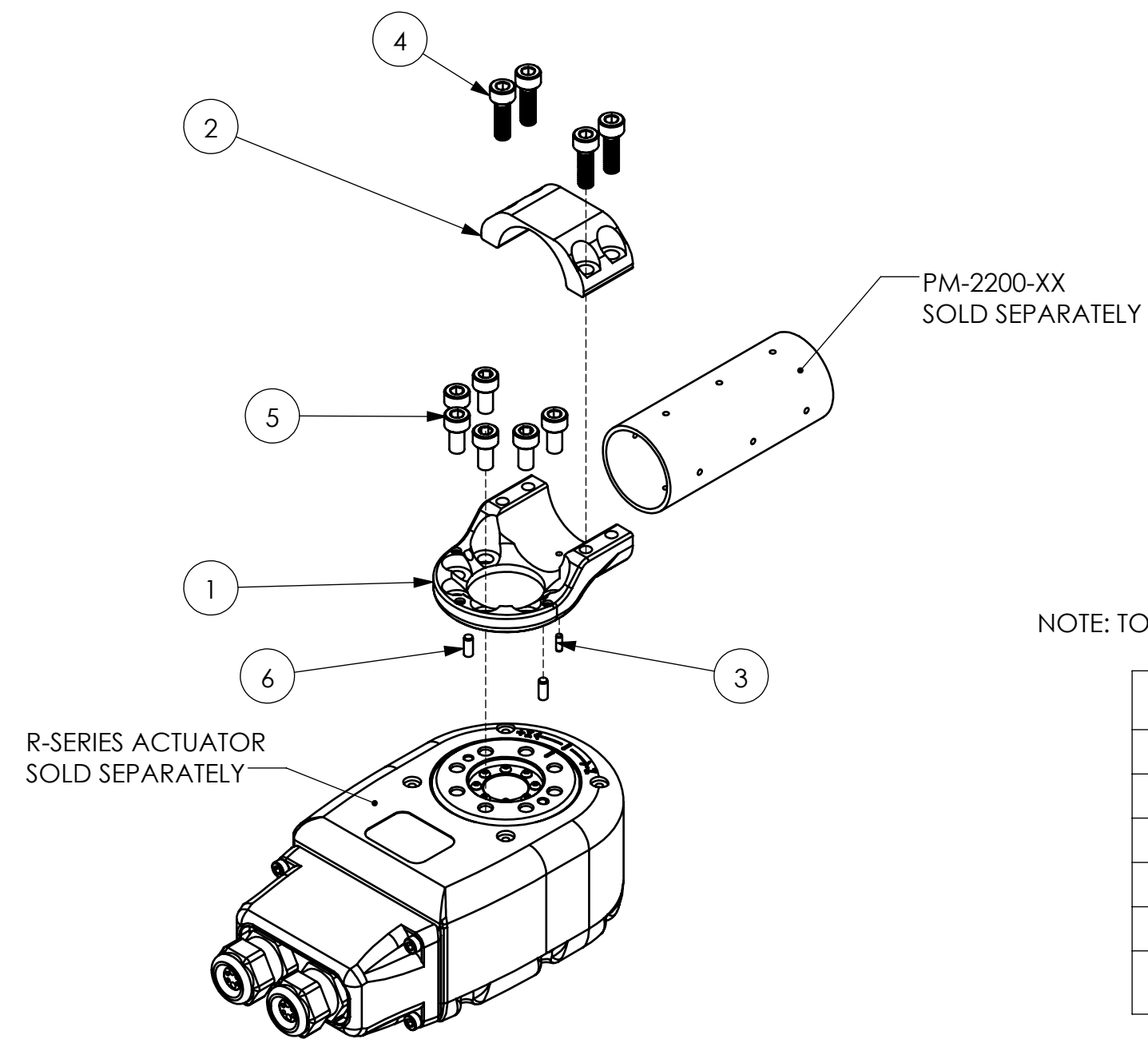


REVISIONS			
REV.	DESCRIPTION	DATE	APPROVED
A.01	INITIAL DRAFTING AND LAYOUT.	26 APR 2019	H KIM

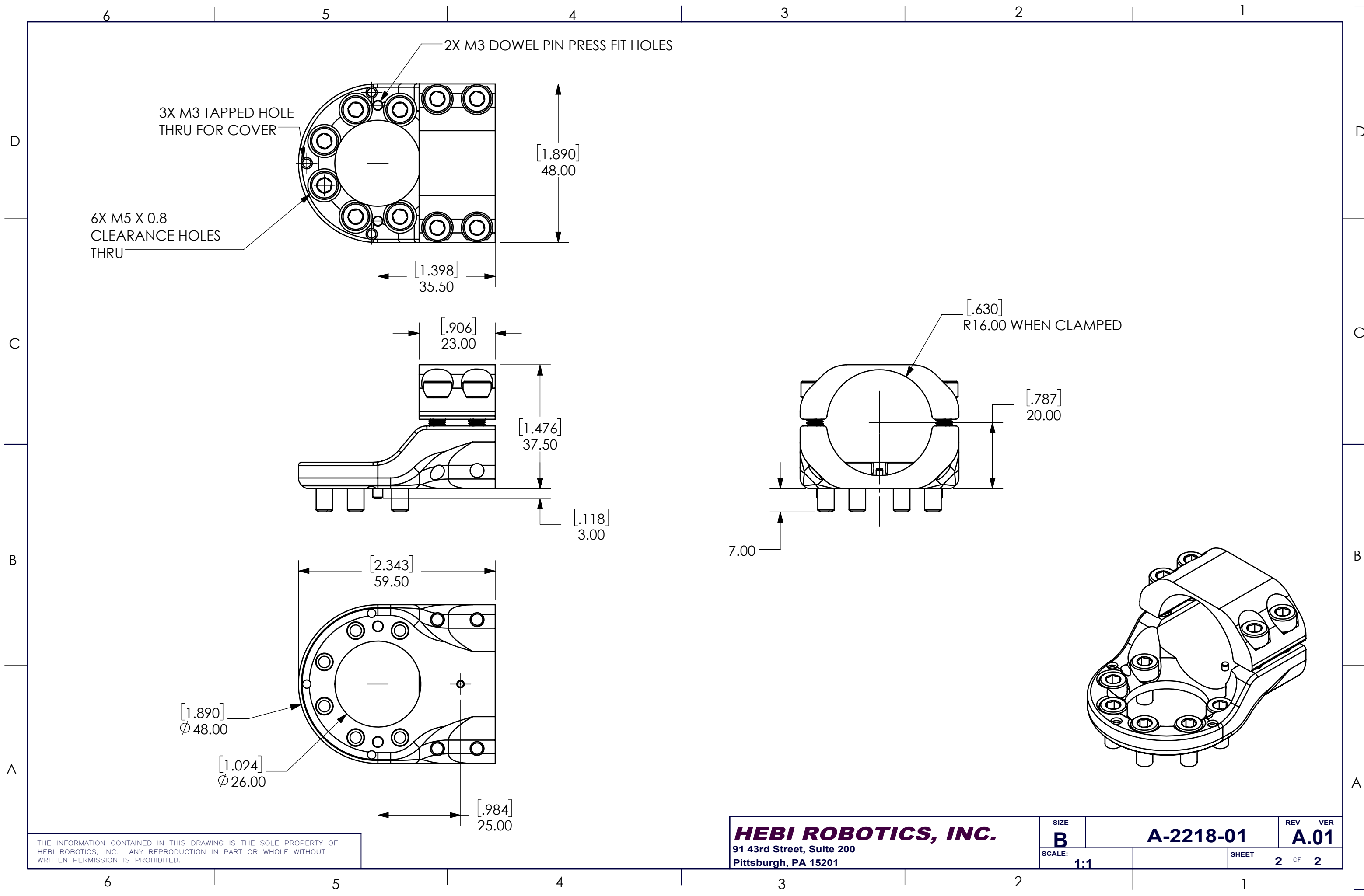


NOTE: TOTAL WEIGHT EXCLUDES R-SERIES ACTUATORS (SEE CONFIGURATION ON SHEET 2)

ITEM NO.	PART NUMBER	DESCRIPTION	Default/ QTY.
1	PM-2146-04	Output Tube Mount	1
2	PM-2148-02	Tube Clamp	1
3	PP-2136-06	M2 Dowel Pin, 6mm Length, SS	1
4	PP-2410-16	M5 SHCS, 16mm Length, Stainless Steel	4
5	PP-2410-10	M5 SHCS, 10mm Length, Stainless Steel	6
6	PP-2452-08	M3 Dowel Pin, 8mm Length, Stainless Steel	2

AUTHORIZATION		HEBI ROBOTICS, INC.	
DFTG: H KIM	11 APR 2019	91 43rd St, Suite 200 Pittsburgh, PA 15201	
DSGMR: H KIM	11 APR 2019	PROJECT: R-Series Accessories	
CHKR:		Output Tube Adapter Assembly	
ENGR:			
UNLESS OTHERWISE SPECIFIED DIMENSIONS ARE IN MM DO NOT SCALE DRAWING			
TOLERANCES:		X.X ±.30	REV VER
	X.XX ±.08	A-2218-01	
	ANGLES ±1.00°	SCALE: 1:2	WEIGHT: 77.24 G
		SHEET 1 OF 2	FILE NAME: A-2218-01.SLDDRW

THE INFORMATION CONTAINED IN THIS DRAWING IS THE SOLE PROPERTY OF HEBI ROBOTICS, INC. ANY REPRODUCTION IN PART OR WHOLE WITHOUT WRITTEN PERMISSION OF IS PROHIBITED.



3X M3 TAPPED HOLE THRU FOR COVER

2X M3 DOWEL PIN PRESS FIT HOLES

6X M5 X 0.8 CLEARANCE HOLES THRU

[.630] R16.00 WHEN CLAMPED

THE INFORMATION CONTAINED IN THIS DRAWING IS THE SOLE PROPERTY OF HEBI ROBOTICS, INC. ANY REPRODUCTION IN PART OR WHOLE WITHOUT WRITTEN PERMISSION IS PROHIBITED.

HEBI ROBOTICS, INC.
 91 43rd Street, Suite 200
 Pittsburgh, PA 15201

SIZE B	A-2218-01	REV A.01	VER
SCALE: 1:1	SHEET 2	OF	2