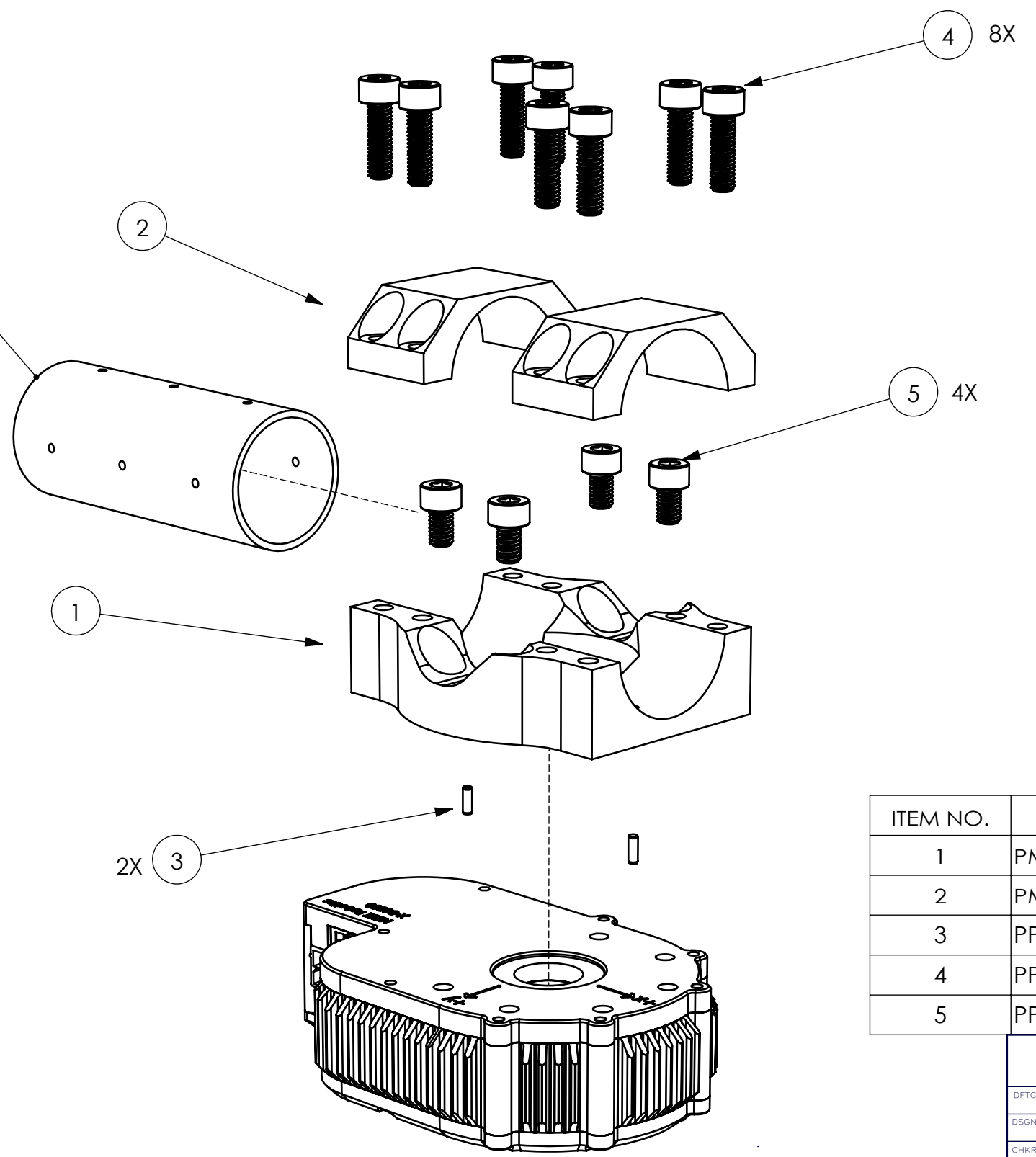


REVISIONS			
REV.	DESCRIPTION	DATE	APPROVED
A.01	INITIAL DRAFTING AND LAYOUT.	31 AUG 2017	H KIM

D  
C  
B  
A

PM-2200-XX  
SOLD SEPARATELY



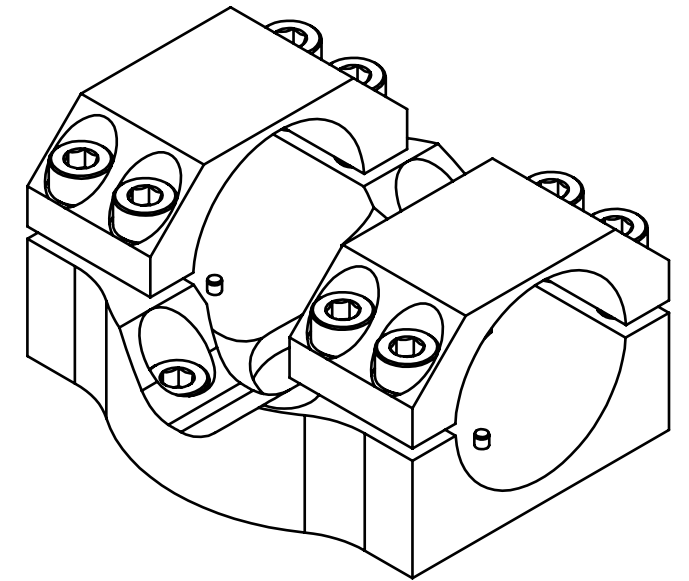
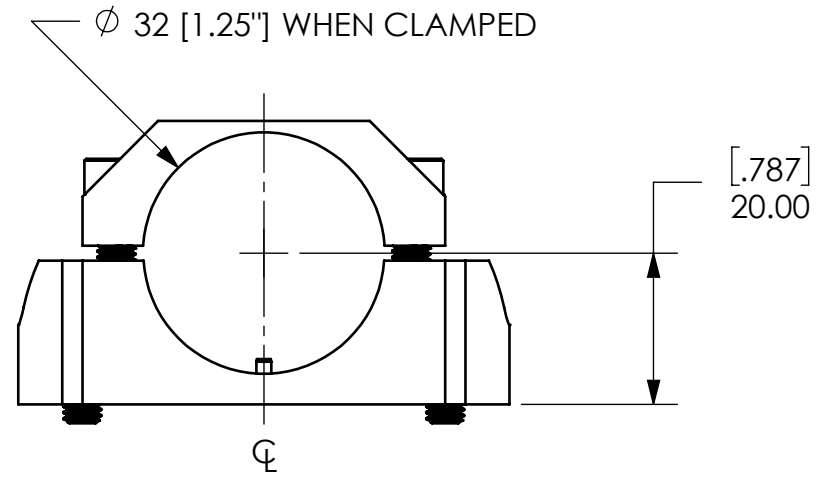
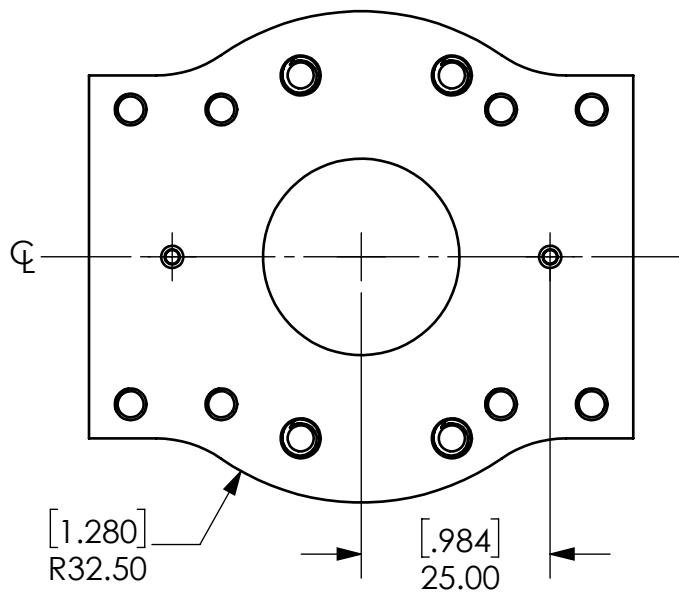
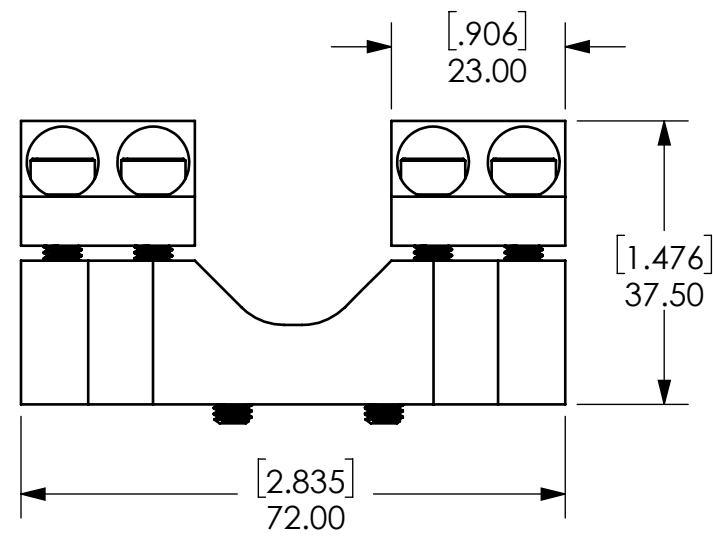
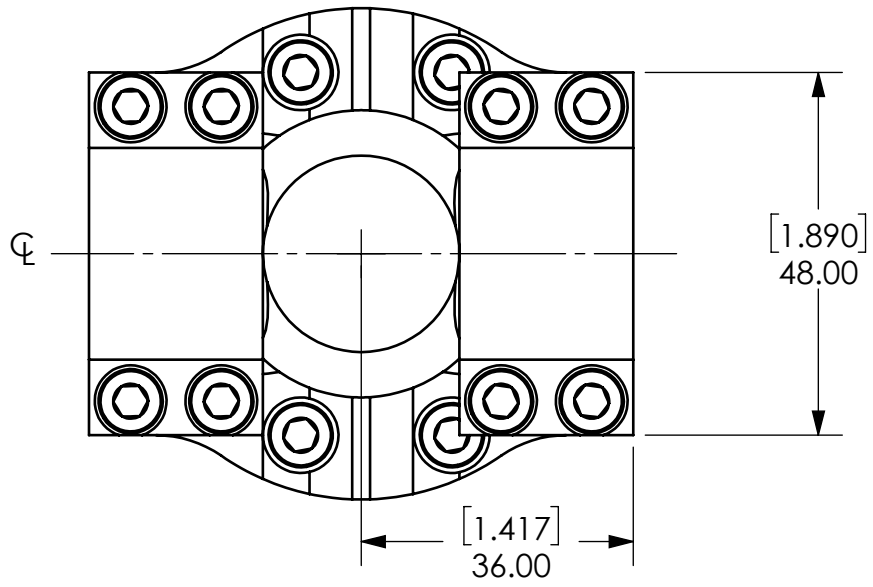
THE MODULE IS NOT INCLUDED IN THE PRICE

ITEM NO.	PART NUMBER	DESCRIPTION	QTY.
1	PM-2190-02	Housing Tube Mount	1
2	PM-2148-01	Tube Clamp	2
3	PP-2136-06	M2 Dowel Pin, 6mm Length, SS	2
4	PP-2131-16	M5 SHCS, 16mm Length, Steel	8
5	PP-2131-08	M5 SHCS, 8mm Length, Steel	4

NOTE: TOTAL WEIGHT EXCLUDED TUBE, X5 ACTUATOR, AND M5 X 0.8 X SCREWS (SEE CONFIGURATION ON PAGE 2)

THE INFORMATION CONTAINED IN THIS DRAWING IS THE SOLE PROPERTY OF HEBI ROBOTICS, INC. ANY REPRODUCTION IN PART OR WHOLE WITHOUT WRITTEN PERMISSION OF IS PROHIBITED.

AUTHORIZATION		<b>HEBI ROBOTICS, INC.</b>	
DFTG: H KIM	31 AUG 2017	91 43rd St, Suite 200 Pittsburgh, PA 15201	
DSGMR: H KIM	31 AUG 2017	PROJECT: X-Series Actuator	
CHKR:		1.25" Horizontal Tube Adapter - Housing	
ENGR:		SIZE <b>B</b>	REV <b>A.01</b>
UNLESS OTHERWISE SPECIFIED DIMENSIONS ARE IN MM DO NOT SCALE DRAWING		SCALE: 1:1	VER <b>A.01</b>
TOLERANCES: X.X ±.30 X.XX ±.08 ANGLES ±1.00°		WEIGHT: 158.119 G	SHEET 1 OF 2



THE INFORMATION CONTAINED IN THIS DRAWING IS THE SOLE PROPERTY OF HEBI ROBOTICS, INC. ANY REPRODUCTION IN PART OR WHOLE WITHOUT WRITTEN PERMISSION IS PROHIBITED.

**HEBI ROBOTICS, INC.**  
5001 Baum Blvd, Suite 780  
Pittsburgh, PA 15213

SIZE <b>B</b>	<b>A-2089-01</b>	REV <b>A.01</b>	VER
SCALE: 1:1	SHEET 2 OF 2		