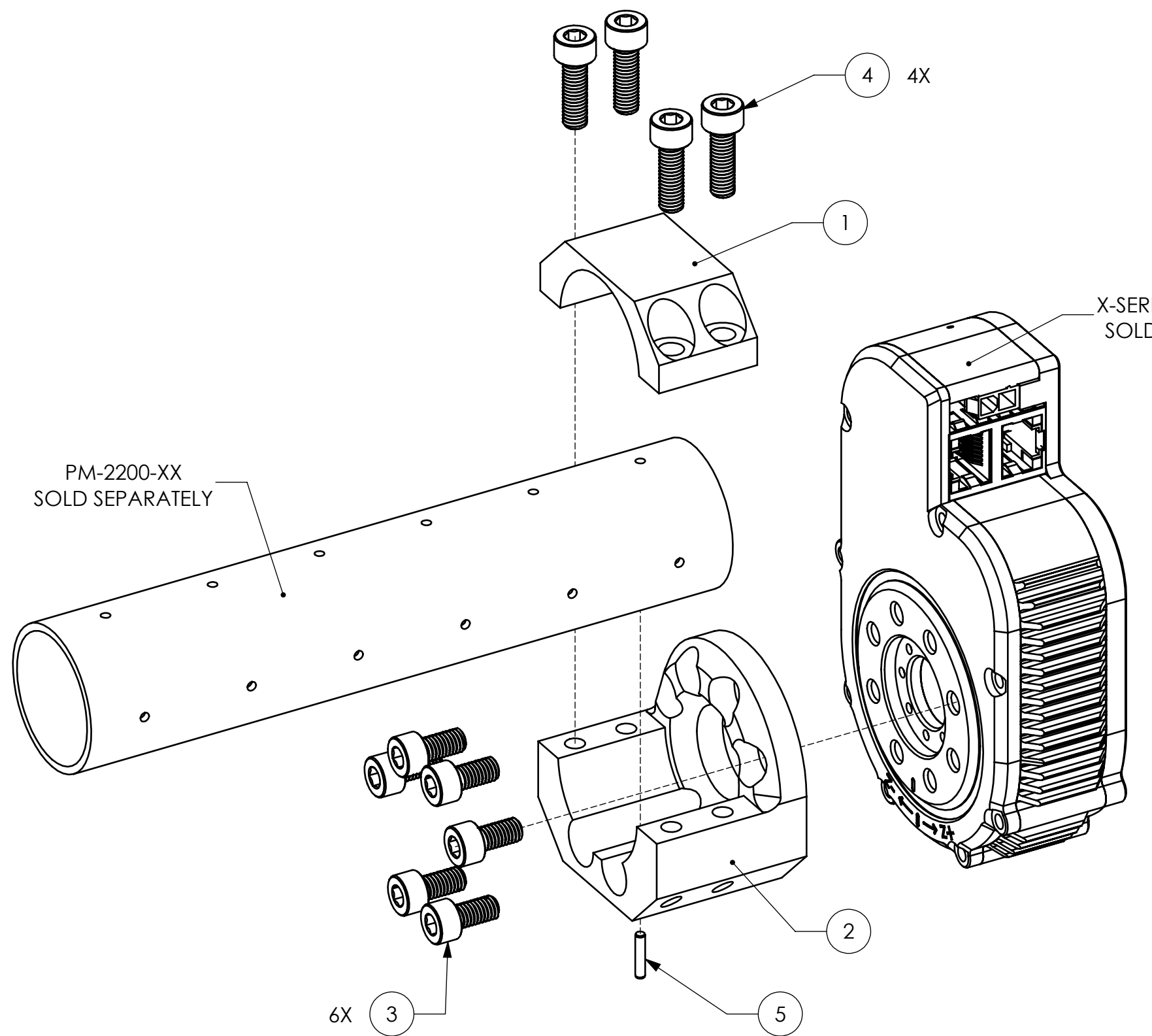


REVISIONS			
REV.	DESCRIPTION	DATE	APPROVED
A.01	INITIAL DRAFTING AND LAYOUT.	21 AUG 2017	A WILLIG
A.02	UPDATED BOM AND NOTES.	6 SEP 2017	A WILLIG



X-SERIES ACTUATOR
SOLD SEPARATELY

PM-2200-XX
SOLD SEPARATELY

ITEM	PART NUMBER	DESCRIPTION	QTY
1	PM-2148-01	Tube Clamp	1
2	PM-2282-01	Output In-Line Tube Adapter	1
3	PP-2131-10	M5 SHCS, 10mm Length, Steel	6
4	PP-2131-16	M5 SHCS, 16mm Length, Steel	4
5	PP-2136-10	M2 Dowel Pin, 10mm Length, Stainless Steel	1

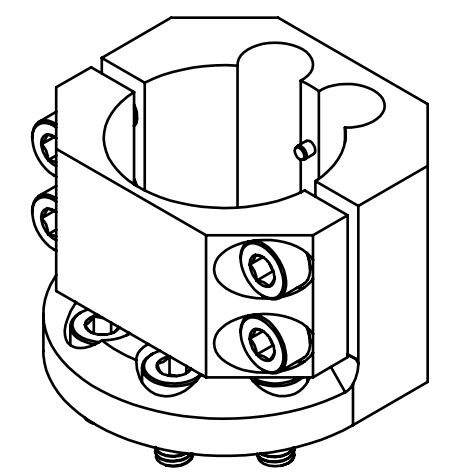
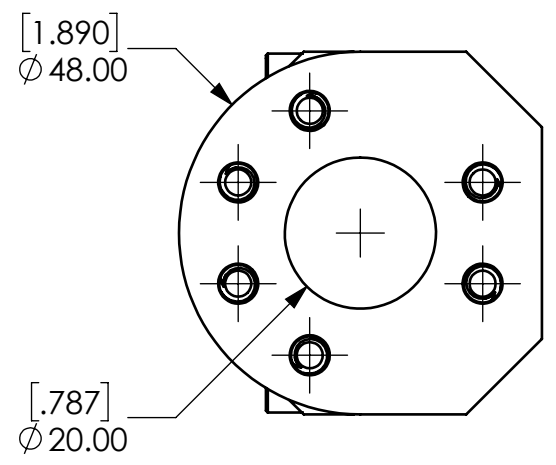
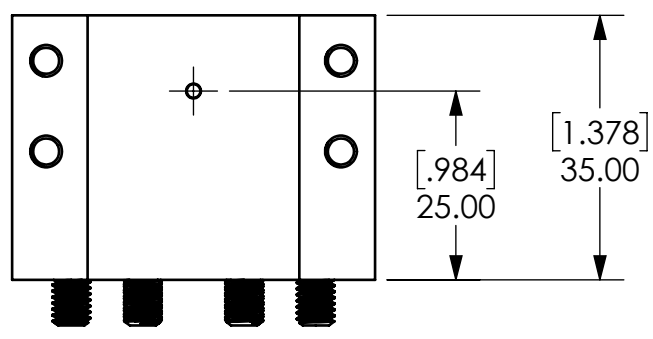
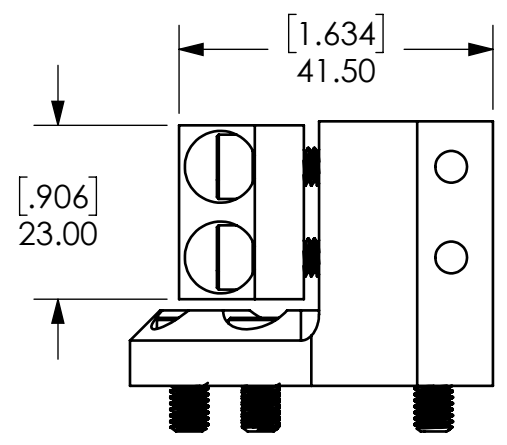
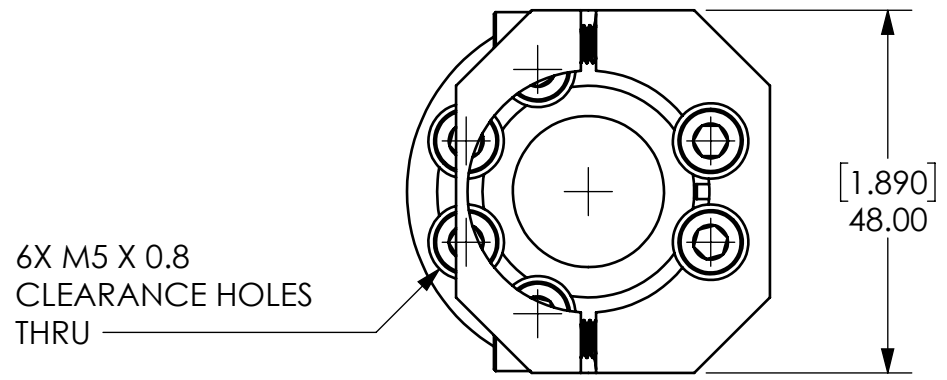
NOTE: TOTAL WEIGHT EXCLUDES X-SERIES ACTUATOR AND TUBE (SEE CONFIGURATION ON SHEET 2)

THE INFORMATION CONTAINED IN THIS DRAWING IS THE SOLE PROPERTY OF HEBI ROBOTICS, INC. ANY REPRODUCTION IN PART OR WHOLE WITHOUT WRITTEN PERMISSION OF IS PROHIBITED.

AUTHORIZATION		HEBI ROBOTICS, INC.	
DFTG: A WILLIG	21 AUG 2017	5001 Baum Blvd, Suite 780 Pittsburgh, PA 15213	
DSGMR: A WILLIG	JUL 2017	PROJECT: X-Series Actuator	
CHKR:		In-Line Tube Adapter Output	
ENGR:			
UNLESS OTHERWISE SPECIFIED DIMENSIONS ARE IN MM		SIZE B	REV A.02
DO NOT SCALE DRAWING		VER	
TOLERANCES: X.X ±.30 X.XX ±.08 ANGLES ±1.00°		SCALE: 1:1	WEIGHT: 117.096 G
		SHEET 1 OF 2	
FILE NAME: A-2074-01.SLDDRW			

6 5 4 3 2 1

D
C
B
A



THE INFORMATION CONTAINED IN THIS DRAWING IS THE SOLE PROPERTY OF
HEBI ROBOTICS, INC. ANY REPRODUCTION IN PART OR WHOLE WITHOUT
WRITTEN PERMISSION IS PROHIBITED.

HEBI ROBOTICS, INC.
5001 Baum Blvd, Suite 780
Pittsburgh, PA 15213

SIZE B	A-2074-01	REV A.02	VER
SCALE: 1:1	SHEET 2	OF	2

6 5 4 3 2 1